

Week 3: Indigenous Transformations and Responses to Early Colonization

1. MH 1.F.C

Unknown, Zuni Pueblo

Pronghorn

Earthenware with white slip and red and black pigment, late 19th century

Gift of Mrs. Mary E. Hawkes (Class of 1882)

Description: Brown and white clay sculpture in the shape of a stag.



2. MH 2016.12.6

Lucy M. Lewis, Acoma Pueblo; American (1903-1992)

Jar (olla)

Earthenware with white slip and red and black pigment, ca. 1953

Gift of Juli Shea Towell (Class of 1955) and Gil Towell

Description:



3. MH 2016.12.7

Grace Chino, Acoma Pueblo; American (1929-1994)

Seed pot

Earthenware with white slip and red and black pigment, last quarter of the 20th century

Gift of Juli Shea Towell (Class of 1955) and Gil Towell

Description:



4. MH 2016.12.8

Unknown, Zuni Pueblo

Child-size jar (olla)

Earthenware with white slip and red and black pigment, ca. 1900-1925

Gift of Juli Shea Towell (Class of 1955) and Gil Towell

Description:



5. MH 2016.12.9

Anderson Peynetsa, Zuni Pueblo; American (1964-)

Jar (olla)

Earthenware with white slip and red and black pigment, ca. 2005

Gift of Juli Shea Towell (Class of 1955) and Gil Towell

Description:



6. MH 2016.12.10

Candelaria Gachupin, Zia Pueblo; American (1908-1997)

Jar (olla)

Earthenware with white slip and red and black pigment, mid-20th century

Gift of Juli Shea Towell (Class of 1955) and Gil Towell

Description:



7. MH 2013.37.2

Edward Sheriff Curtis, American (1868-1952)

Arikara Medicine Ceremony-The Ducks

Photogravure on Holland van Gelder, 1908

Purchase with funds from Dr. Norman E. Aubrey

Description: A vertical image of three men, half naked, dancing in a line and holding plants in hand in the field.



8. MH 2016.7.12

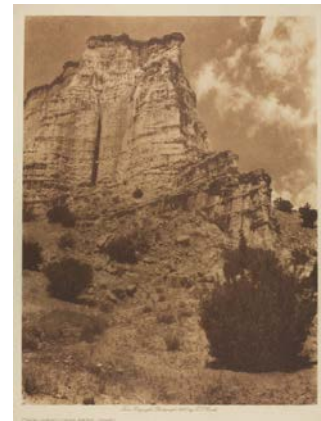
Edward Sheriff Curtis, American (1868-1952)

Cave-Dwellings near Jemez [Pueblo, New Mexico]

Photogravure on tissue, 1925

Bonnie Barrett Stretch (Class of 1961) Photography Collection, Purchase with the Abbie Bosworth Williams (Class of 1927) Fund

Description:



9. MH 2016.7.13

Edward Sheriff Curtis, American (1868-1952)

Stone Maze [Mohave]

Photogravure on tissue, 1907

Bonnie Barrett Stretch (Class of 1961) Photography Collection, Purchase with the

Abbie Bosworth Williams (Class of 1927) Fund

Description:



Week 5: Westward Migrations—Gold Rushers, Mormons, and the Question of Indian Genocide

10. MH SK 2006.1391.INV

not applicable, not applicable

Gold ore

Quartz and gold,

Joseph Allen Skinner Museum, Mount Holyoke College

Description: Small specimen of white and gold colored gold ore in quartz. Tag

reads: "Gold Ore from Gold Hill, Virginia City, Nevada."

Dana's System of Mineralogy number: 1.1.1.1



11. MH SK B.14.N.22.3

Unknown, American

Scales

Joseph Allen Skinner Museum, Mount Holyoke College

Description:



12. MH 158.F

Unknown, Ute

Beads

Glass, 19th century

Source and date of acquisition unknown

Description: Many loose beads varying in size - the largest being light green and black, with smaller blue, white, and red beads.



13. MH 1952.1.S.SIII
Unknown, Russian

Icon

1792

Gift of the estate of Newcomb Cleveland

Description:



14. MH 1952.3.S.SIII
Unknown, Russian

Metal Easter Egg

Gift of the estate of Newcomb Cleveland

Description:



15. MH 1952.4.S.SVI
Unknown, Russian

Vestment

Gift of the estate of Newcomb Cleveland

Description: Square with cross of pearls in center of lavender fabric; surrounded by four painted angel heads and embellished by pearl and gold embroidery; 4 gold tassels on each corner and gold fringe around the edges; four gold and pearl embroidered circles.



16. MH 1952.7.S.SVI
Unknown, Russian

Vestment

Gift of the estate of Newcomb Cleveland

Description: Eight saints embroidered on green velvet with names in niches



17. MH 1968.4.S.PI

Unknown, Russian

Virgin and Child with Saints Kozma and Damian

Tempera on panel with gold leaf, mid to late 18th century

Gift of Nancy Sibley Wilkins (Class of 1911)

Description: two standing male saints with Virgin and Child above in lunette



18. MH SK 2006.510.INV

Unknown, American

Bear Trap

iron,

Joseph Allen Skinner Museum, Mount Holyoke College

Description: Large animal trap, likely for bears, with heavy chain attached. Two V springs, a center cross bar, and pointed teeth inside the trap.

Week 6 at SKINNER: The Civil War and "Indian Wars" in the West

19. MH SK L.B.1.1

Sharps Rifle Manufacturing Company, American

Sharp's Carbine

Walnut and steel, 1859-1900

Joseph Allen Skinner Museum, Mount Holyoke College

Description:



As well as other civil war era arms, medical kit, etc.

Week 9: Alaska and the Northwest Coast—Sacred Landscapes and Tourist Frontiers

20. MH 1.G

Unknown, Native Alaskan; Inuit

Comb

Walrus ivory and ink,

Gift of Mary Gage Peterson (Class of 1865)

Description: Carved ivory comb, middle teeth broken; decorated with geometric patterns (circles) on both sides. The pattern is a series of uniform circles with dots in the center. There is also a double line incised around the inside of the handle edges. The handle is decorated on the front and back with incised lines stained with black ink. One side of the comb is stained and appears darker than the other. Seven of the comb's teeth remain of the original eighteen.



21. MH 16b.G

Unknown, Native American; American Indian; Native Alaskan; Inuit or Yupik

Seal drag toggle

Ivory and ink,

Gift of Mary Gage Peterson (Class of 1865)

Description: Carved ivory in the shape of a seal with mouth and paws incised and blackened with ink. Hole runs through center.



22. MH 2000.266.21.INV

Tony Pushruk, Native Alaskan; Inuit

Mask

Wood, stain, and leather cord, 20th century

Gift of Rachel Simmet (Class of 1931)

Description: Oval-shaped wooden mask, stained black with white eyes. Beak is natural wood color. Leather string attached as face strap.



23. MH 2003.26.3

Unknown, Inuit

Snow goggles

Wood, 19th or early 20th century

Gift of Anna B. Clarke (Class of 1876) and Transfer from the Mount Holyoke College Archives and Special Collections

Description: Missionary Cabinet. Wooden goggles with two eye slits, indentation for bridge of nose, smooth front, roughly carved back, and two holes on each side for straps. There are traces of potentially sinew fibers tied to each hole. In the back, the fibers are wrapped around a black material keeping the straps in place. The insides of the eye slits are blackened with soot or graphite, providing additional protection from the glare of the sun. Snow goggles were made out of multiple materials, including bone and various types of wood, but because wood is easier to carve and more available, it is more common. These could have been



24. MH 2016.7.14

Edward Sheriff Curtis, American (1868-1952)

Umiak and Crew, Cape Prince of Wales

Photogravure on tissue, ca. 1928

Bonnie Barrett Stretch (Class of 1961) Photography Collection, Purchase with the Abbie Bosworth Williams (Class of 1927) Fund

Description:



25. MH 2013.37.1

Edward Sheriff Curtis, American (1868-1952)

Ugiyaku-Nunivak

Photogravure on Japan vellum, 1928

Purchase with funds from the Class of 1955 in honor of Susan McGreevy

Description: A vertical portrait of a woman grinning and wearing a white outfit and beaded jewelry on her nose and beneath her lips.



26. MH 2013.37.3

Edward Sheriff Curtis, American (1868-1952)

Nuhlimahla-Qagyuhl

Photogravure on Japanese tissue, 1914

Purchase with funds from Dr. Norman E. Aubrey

Description: A vertical photogravure of a person in black cloak, wearing a mask.



Week 10: Native Hawaiians and American Empire in the Pacific

27. MH 7.V.M

Unknown, Hawaiian

Whale tooth necklace (lei niho palaoa)

Human hair, olona fiber, and walrus ivory, early 19th century

Source and method of acquisition unknown (probably 1844)

Description: Missionary Cabinet. necklace made of braided human hair, olona fiber, with large walrus ivory pendant that is in a hook shape and has ink inscription on front side reading: "[?] Mi[cro]nesia / necklace." Bundled brown stands roped together with string. Braided cord where necklace ties in back.



28. MH 1.19.V.B(a)

Unknown, Oceanic; Polynesian; Hawaiian

Ring pounder; Poi pounder; Pohaku puka ku'i poi

Basalt,

Source and date of acquisition unknown

Description:



29. MH 9.V.M

Unknown, Oceanic; Polynesian; Hawaiian

Kapa Cloth; Tapa Cloth; Bark Cloth

Bark cloth,

Gift of Miss Hanse before 1892.

Description: Missionary Cabinet. Three pieces, several large. All have different designs and colors. Made by the Amasnayi from bark of tree.



30. MH 2003.26.25

Unknown, Oceanic; Pacific Islands; Micronesian

Purse

Straw,

Transfer from the Mount Holyoke College Archives and Special Collections

Description: Missionary Cabinet. Small clutch (no handle) with removeable top. Medium diagonal weave, seamless.



31. MH SK 2006.1921.INV

Oceanic Steamship Company (Publisher), American

Hawaii, The Paradise of the Pacific and the Inferno of the World

Joseph Allen Skinner Museum, Mount Holyoke College

Description: A travel book, advertising Hawaii. "Hawaii, The Paradise of the Pacific and the Inferno of the World." Published by the Oceanic Steamship Co, San Francisco.

32. MH SK D.60.K1

Captain King, American

Captain Cook's Third and Last Voyage to the Pacific Ocean

Half leather, wood, paper, 1795

Joseph Allen Skinner Museum, Mount Holyoke College

Description: Captain Cook's Third and Last Voyage to the Pacific Ocean, in the years 1776, 1777, 1778, 1779 & 1780: Together with an account of his Death. Faithfully abridged from the Quarto Edition. By Captain King. Worcester, Massachusetts, from the press of Isaiah Thomas, jun. sold whole-sale and retail at his bookstore. 1795. Half leather- wood, covered with paper, now mostly worn off.

33. MH SK 2006.1953.INV

Unknown, Hawaiian

Classroom assignments

Joseph Allen Skinner Museum, Mount Holyoke College

Description: Twenty single pages, and nine additional pages stapled together and addressed to Miss Eastman. This includes letters to the teacher, student maps of South America and Hawaii, and school lessons. The letters to Miss Eastman are all dated March 1892 and follow the same format. Each letter is marked with the racial origin of the writer.

Week 12: Tell the Story in Pictures–Visual Cultures of the West

34. MH 1876.2.I(b).PI

Albert Bierstadt, American (1830-1902)

Hetch Hetchy Canyon

Oil on canvas, 1875

Gift of Mrs. E. H. Sawyer and Mrs. A. L. Williston

Description: Vertical landscape with stream, small waterfall, large trees on right, canyon walls to the left and elk in foreground. Golden sunlight and clouds in sky.



35. MH 2006.15

Galen Rowell, American (1940-2002)

Hetch Hetchy Valley

Crystal Archive LightJet photograph, 1987

Purchase with the Art Acquisition Fund

Description: View of the reservoir in the Hetch Hetchy Valley. The scene is complete with sky, cliffs, and some brush that surround the reservoir and are reflected in its blue waters.



36. MH 2007.2.1

Charles Bierstadt, American (b. Germany 1819-1903)

El Capitan Yosemite Valley

Albumen print stereocard photograph, 1872-1873

Gift of Lewis A. Shepard

Description: Two identical black and white photographs of a landscape on a single sheet, arranged for viewing with a stereoscope. There are trees on a cliff and a waterfall behind them. The only difference between the two images is the inclusion of a sign reading [116 El Capitan Yosemite [sic.] Valley] on the left.



37. MH 2013.25

Carleton E. Watkins, American (1829-1916)

Yosemite Falls, 2630 Ft.

Albumen print photograph, 1861

Purchase with funds from Dr. Norman Aubrey and the Susan and Bernard Schilling (Susan Eisenhart, Class of 1932) Fund

Description: A horizontal black and white photograph of Yosemite falls with one fourth of the image as foreground.



38. MH 1991.23.2.14

Ansel Adams, American (1902-1984)

Portfolio Three-Yosemite Valley: Bridal Veil Fall

Gelatin silver print photograph, 1960

Gift of Hugh Tatlock, M.D. in memory of Jessie Tatlock

Description:



39. MH 1991.23.2.15

Ansel Adams, American (1902-1984)

Portfolio Three-Yosemite Valley: Trees and Cliffs

Gelatin silver print photograph, 1960

Gift of Hugh Tatlock, M.D. in memory of Jessie Tatlock

Description:



40. MH 1991.23.2.16

Ansel Adams, American (1902-1984)

Portfolio Three-Yosemite Valley: Half Dome, Thunder Cloud

Gelatin silver print photograph, 1960

Gift of Hugh Tatlock, M.D. in memory of Jessie Tatlock

Description:



41. MH 1991.23.3.5

Ansel Adams, American (1902-1984)

What Majestic Word: Cathedral Peak and Lake, Yosemite

Gelatin silver print photograph, 1963

Gift of Hugh Tatlock, M.D. in memory of Jessie Tatlock

Description:



Week 13: Contested Fruits of the Land – Agricultural Innovation and Chicano/a Activism

42. MH 1992.3.174

Unknown, American

Crate label; Western Queen Brand

Lithograph, ca. 1925-1945

Gift of anonymous donor

Description: One of 350 fruit/vegetable crate labels; a few beverage labels: conventional size and shape; oblong shape and diverse shapes. mostly of the 1920s and 1930s.



43. MH 1992.3.213

Unknown, American

Crate label; Westside Brand

Lithograph, ca. 1925-1945

Gift of anonymous donor

Description: One of 350 fruit/vegetable crate labels; a few beverage labels: conventional size and shape; oblong shape and diverse shapes. mostly of the 1920s and 1930s.



44. MH 1992.3.347

Unknown, American

Crate label; Pacific Pride Brand

Lithograph, ca. 1925-1945

Gift of anonymous donor

Description: One of 350 fruit/vegetable crate labels; a few beverage labels: conventional size and shape; oblong shape and diverse shapes. mostly of the 1920s and 1930s.



45. MH 2004.5.33

Unknown, American

Crate label; [Pacific Pride, Pacific Fruit Exchange]

Ink on paper, 1920-1940

Gift of Eugenia and Robert L. Herbert

Description: boat on water at sunset nearing bridge; sun is replaced by "Pacific Fruit Exchange" which creates orange rays over the horizon; mountains frame the image; dark blue border around image is thicker at sides.



Other material for consideration

46. MH 2014.37.1

John Willis, American (1957-)

Victoria Chipps, of the Horn Chipps lineage of medicine men, on her ninetieth birthday with her great-granddaughter, from the series A View from the Rez
Peiziographic pigment archival inkjet print on Hahnemühle Photo Rag paper, 2005 negative; 2012 print

Gift of Richard S. and Jeanne Press

Description:



47. MH 2014.37.2

John Willis, American (1957-)

Eugene Reddest preparing the C'anupa (the sacred pipe), from the series A View from the Rez

Peiziographic pigment archival inkjet printed on Hannamuele Photo Rag paper, 2002 negative; 2012 print

Gift of Richard S. and Jeanne Press

Description:



48. MH 2014.37.3

John Willis, American (1957-)

Vern Sitting Bear and his niece's pet wolf, from the series A View from the Rez
Peiziographic pigment archival inkjet printed on Hannamuele Photo Rag paper, 2004 negative; 2012 print

Gift of Richard S. and Jeanne Press

Description:



49. MH 2014.37.4

John Willis, American (1957-)

The Mass Gravesite at Wounded Knee, from the series A View from the Rez
Peiziographic pigment archival inkjet printed on Hannamuele Photo Rag paper,
2007 negatives; 2012 print
Gift of Richard S. and Jeanne Press
Description:



50. MH 2014.46.14

Joel Meyerowitz, American (1938-)

Yosemite
Vintage chromogenic print, 1983
Gift of Robert and Kathi Steinke
Description:



51. MH 2015.28.1

Carleton E. Watkins, American (1829-1916)

Yosemite Falls
Albumen print photograph, 1865-1866
Bonnie Barrett Stretch (Class of 1961) Photography Collection, Gift of Bonnie
Barrett Stretch (Class of 1961)
Description:



52. MH 2015.28.2

Carleton E. Watkins, American (1829-1916)

The Valley from Mariposa Trail, Yosemite, California
Albumen print photograph, 1861?
Bonnie Barrett Stretch (Class of 1961) Photography Collection, Gift of Bonnie
Barrett Stretch (Class of 1961)
Description:



53. MH 2015.30.2

Edward Sheriff Curtis, American (1868-1952)

Arapaho Water Girl

Probably photogravure, 1910

Gift of Ann Zelle (Class of 1965)

Description: A woman reaches down to collect water.



54. MH 2016.7.8

Edward Sheriff Curtis, American (1868-1952)

Sioux sub chief Red Hawk - Oasis in the Badlands, South Dakota

Sepia-toned silver gelatin print photograph, 1904

Bonnie Barrett Stretch (Class of 1961) Photography Collection, Purchase with the

Susan and Bernard Schilling Fund (Susan Eisenhart, Class of 1932) Fund

Description:



55. MH 2016.7.9

Edward Sheriff Curtis, American (1868-1952)

Southern Shoshonean Pottery

Photogravure on paper, 1924

Bonnie Barrett Stretch (Class of 1961) Photography Collection, Purchase with the

Abbie Bosworth Williams (Class of 1927) Fund

Description:



56. MH 2016.7.10

Edward Sheriff Curtis, American (1868-1952)

Fish-drying Racks, Nunivak

Photogravure on paper, 1928

Bonnie Barrett Stretch (Class of 1961) Photography Collection, Purchase with the

Abbie Bosworth Williams (Class of 1927) Fund

Description:



57. MH 2016.7.11

Edward Sheriff Curtis, American (1868-1952)

Totem at Yan, Representing a Caucasian

Photogravure on paper, 1915/16

Bonnie Barrett Stretch (Class of 1961) Photography Collection, Purchase with the Abbie Bosworth Williams (Class of 1927) Fund

Description:



58. MH SK C.A.41

Currier & Ives, American

The Route To California: Truckee River, Sierra Nevada

Lithograph, c 1871

Joseph Allen Skinner Museum, Mount Holyoke College

Description: Fine hand-colored lithograph of "The Route to California - Truckee River, Sierra Nevada." Published by Currier & Ives, 152 Nassau St., New York.

Entered according to the Act of Congress in the year 1871 by Currier & Ives.

Includes view along river towards the Sierra Nevada Mountains; train engine in foreground

59. MH 1991.4.677

Robert Laurie (publisher); James Whittle (publisher), British (1755-1836); British (d. 1818)

A New and General Map of the Southern Dominions Belonging to the United States of America, viz North Carolina, South Carolina, and Georgia with the Bordering Indian Countries, and the Spanish Possessions of Louisiana and Florida

Engraving with hand coloring, 1794 May

Bequest of Helene Brosseau Black (Class of 1931)

Description: Map of Florida, Louisiana, Georgia, South Carolina and part of Virginia. Two inset maps on the right of the cities of Charlestown and St.

Augustine. Cartouche with title in the lower right. Map scale in the lower left.
